

# Marine Monitoring



1 A patrol on Fish Hoek Beach



2



2-3: Induction Training at Soetwater



4 Slipway Monitoring

## Expanded Public Works Programme

In March 2004 the Department of Environmental Affairs and Tourism (DEAT) granted Table Mountain National Park (TMNP) R35 million to run a three-year Expanded Public Works Programme (EPWP). The aim of the programme is threefold:

- to create conservation and tourism-based training and skills development opportunities for 450 people from the townships bordering the Park,
- to develop a strong and durable infrastructure that will minimize the impact of the TMNP's annual 4.2 million visits on the Park's biodiversity,
- to create a high-quality tourism infrastructure to help realise the TMNP's goal of becoming the world's premier urban National Park by 2010.

Workers who have been trained under the EPWP will all have developed skills that will enable them to compete on the open market once the programme is complete.



## Marine Monitoring

In June 2004 the seas around the peninsula were proclaimed as the Table Mountain National Park Marine Protected Area which is managed in partnership by TMNP and Marine and Coastal Management. As marine management is new to the Park a team of marine monitors, funded by the Expanded Public Works Programme, were trained to monitor all coastal and inshore activities. They have been trained to input data into palmtop computers that function using blue tooth technology. Data collected includes information as diverse as quantities and type of bait being harvested, recreational use, the location of litter and faunal sightings. The regular collation of this data will assist us in the management of our precious marine environment.

The Kommetjie Environmental Awareness Group (KEAG) is coordinating the marine monitors on behalf of the TMNP.



5 An angler assists our research

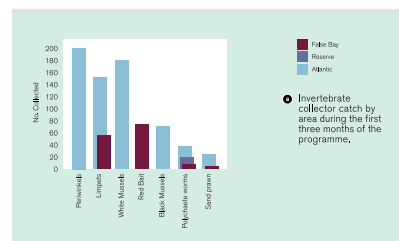


6 Data Capturing

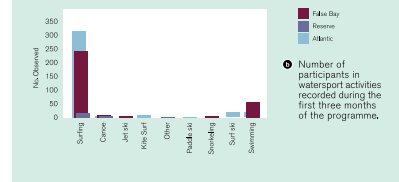
## Cybertrackers



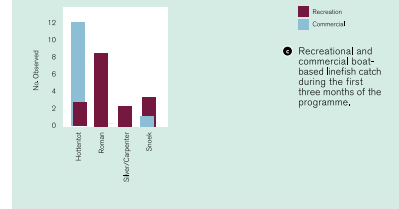
These handheld integrated GPS and data recorders (Cybertrackers) are for collecting survey data. These instruments can automatically record the date, time and location for each data point entered and can be linked up directly to a PC which eliminates the need for capturing data in hard copy format. Monitors are also provided with folding measuring boards, callipers (for recording the size of captured marine organisms), cell phones, note books and protective clothing. Monitors received training in the identification of fish (and other marine organisms) and in survey techniques.



1 Invertebrate collector catch by area during the first three months of the programme.



2 Number of participants in watersport activities recorded during the first three months of the programme.



3 Recreational and commercial boat-based linefish catch during the first three months of the programme.